

YHealth for Growth Conference

Exploring the role of health in economic and inclusive growth

9 December 2019
Cloth Hall Court
Leeds



Richard Stubbs

Chief Executive
Yorkshire & Humber
AHSN



Niall Dickson CBE

Chief Executive
NHS Confederation



**Prof Sir Chris
Husbands**

Vice Chancellor
Sheffield Hallam
University &
Chair Yorkshire
Universities

Introduction

On behalf of Yorkshire & Humber AHSN, the NHS Confederation and Yorkshire Universities we are delighted to welcome you to our YHealth for Growth Conference.

This event will explore the role of health in driving economic and inclusive growth in the Yorkshire and Humber region and recognises the clear linkages between ‘health and wealth’ – we know that a healthy population is a productive and prosperous one and vice versa.

Yorkshire and the Humber as a region does not punch its weight in terms of both economic output and positive health outcomes. However, the region has a huge range of assets and anchor institutions that represent a critical mass in terms of economic geographies, research base, infrastructure and industrial potential.

Our agenda today will challenge leaders in health and care, as we work alongside place shapers and executives from local authorities, business and further and higher education, to develop practical approaches and help secure a deeper commitment and collaboration to support a sustainable and inclusive economic growth agenda.

The timing is important. Each Local Enterprise Partnership or Mayoral Combined Authority in the region is producing its own Local Industrial Strategy and prioritising areas and sectors for investment. The focus is on both ‘health’ and ‘place’ - aligning these with a bold ambition for improving quality of life and economic opportunities; in turn delivering improved health and wellbeing for the people of Yorkshire and the Humber.

We welcome local executives, chairs and senior leaders from across health and care, further and higher education, the voluntary, charity and social enterprise sector and local authorities, as well as business leaders in med tech and life sciences. We are also delighted that national leaders are part of this conversation. We believe this mix of contributions will present a unique opportunity to hear first-hand about innovative practice, share learnings and identify a framework for widening and deepening collaboration within and across the region.

We encourage you to share, speak up and challenge throughout to day to ensure lively debate and provide tangible outcomes for the sessions. The conference will conclude with an informal sponsored drinks’ reception at 4pm - we hope you will be able to join us to continue networking with colleagues.

Purdah and Social Media

YHealth for Growth falls within the purdah period for the 2019 General Election. Therefore, nothing will be launched at today's event. Instead, we will be sharing some key messages from an interim report: 'Exploring the role of health in economic and inclusive growth in Yorkshire and the Humber: A Draft Discussion Paper'. The paper will be developed further following the conference, with a view to launching in early 2020. The event will still have a social media presence on Twitter via **#YHealth4growth** with many of our speakers and organisations contributing. Unless we specifically state otherwise, please feel free to enjoy and contribute to the social media content from the day.

Agenda:

Time	Session brief	Presenters
From 09.30	Registration and refreshments	Ground Floor, Merchants Hall
10.00	Welcome and introduction (2nd Floor, Tweed Suite)	Richard Stubbs Chief Executive, Yorkshire and Humber AHSN
10.15	Place and health at the heart of economic development	Tom Riordan Chief Executive, Leeds City Council
10.45	The role of universities and research and innovation in driving inclusive growth and opportunities in the region	Professor Sir Chris Husbands Vice Chancellor, Sheffield Hallam University and Chair of Yorkshire Universities
11.05	Coffee break & networking	Ground Floor, Merchants Hall
11.30	Delivering for communities (2nd Floor, Tweed Suite) Maximising the social and economic impact of Integrated Care Systems	Rob Webster Chief Executive, South West Yorkshire Partnership NHS Foundation Trust and Lead, West Yorkshire & Harrogate ICS
11.50	Panel Discussion Health and Wealth - the role of health in economic and inclusive growth Panel discussion intended to highlight the growing influence of health on local economies and economic decision-making.	Niall Dickson Chief Executive, NHS Confederation (Panel Chair) Panel featuring: Rob Webster, Chris Husbands, Richard Stubbs, Kathryn Lavery Chair, Yorkshire Ambulance Service, Rosalind Way Head of Strategic Partnerships, Novartis Pharmaceuticals UK Limited, Professor Shirley Congdon , Vice Chancellor, University of Bradford
12.30	Panel session – concluding remarks	Niall Dickson (Panel Chair)
12.40	Lunch and networking	Ground Floor, Merchants Hall

Time	Session brief	Presenters
13.30	Panel Discussion (2nd Floor, Tweed Suite) Partnerships for growth – building effective local cross-sector partnerships with industry Discussion to highlight the need for close partnership working between the NHS, academia and industry. This collaboration can support the faster development and adoption of innovations for patients, a greater R&D offering, and the development of a strong local industrial base.	Richard Stubbs (Panel Chair) Panel featuring: Niall Dickson, Colette Goldrick , Director, NHS Engagement, Association of the British Pharmaceutical Industry (ABPI), Professor Sean Duffy , Programme Clinical Director and Alliance Lead, West Yorkshire and Harrogate Cancer Alliance and Strategic Clinical Lead, Leeds Cancer Programme, Chris Gray , Regional Healthcare Manager, AstraZeneca, Dr Rani Khatib , Consultant Pharmacist, Leeds Teaching Hospitals NHS Trust
14.15	Walking coffee en route to workshops	2nd Floor Breakout Space
14.25	Interactive workshops Chaired by YHealth4Growth Partnership Workshops to hear about specific case studies and provocations and to identify practical actions to be taken forward: 1) What support is needed to develop place plans at national, regional and institutional level? 2) How to measure success? 3) How to strengthen collaboration between different sectors?	Chair: Dr Peter O'Brien , Executive Director, Yorkshire Universities Speaker: Dr Maggie McGowan , Director of Research & Innovation, University of Hull
	1) Research and innovation funding and opportunities – how can Yorkshire attract investment and achieve maximum impact?	Chair: Richard Stubbs Speaker: Felix Kumi-Ampofo , Sheffield City Region
	2) Inclusive growth – what do we mean and how to achieve it across Yorkshire in practice?	Chair: Michael Wood , Head of Health Economic Partnerships, NHS Confederation Speaker: Sue Wynne , Chief Officer Employment and Skills, Leeds City Council
	3) Anchor institutions – what does this mean for Yorkshire's assets and how can we work together to maximise their impact?	
15.30	Health and wealth in the north – making it a common priority (2nd Floor, Tweed Suite)	Henri Murison Director, Northern Powerhouse Partnership
15.50	Closing remarks	Richard Stubbs
16.00 – 18.00	Networking drinks reception, sponsored by Hill Dickinson LLP	Cloth Hall Court – 2nd Floor Breakout Space

We are grateful to all our speakers, panellists and sponsors of today's event:



Professor Shirley Congdon

Vice Chancellor, University of Bradford
| @ShirleyCongdon

Shirley is the eighth Vice Chancellor of the University of Bradford and is the first woman to hold the role. Shirley has significant experience of working in higher education championing the quality of the student experience, widening participation, engagement with business and communities and advancing the quality of research and innovation.

Originally qualifying as a Registered Nurse, Shirley's professional and academic expertise lies within the area of health and social care, service modernisation and cultural change, research methods and evidence-based practice. She has a strong track record in all aspects of university leadership, having worked within the field of higher education for 25 years and held senior roles in three different universities.



Niall Dickson CBE

Chief Executive, NHS Confederation | @NHSC_Niall

Niall has served in some of the most prominent national roles in health and care. Before joining the NHS Confederation, for seven years he was the chief executive and registrar of the General Medical Council, where he oversaw a raft of major reforms. For six years before that he was chief executive of the King's Fund which under his leadership pioneered work on managing long term conditions and the reform of social care funding.

For sixteen years (from 1988 to 2004) he was a senior correspondent for BBC News, latterly as Social Affairs Editor. Early in his career he was the editor of Nursing Times and of a journal for allied health professionals.



Professor Sean Duffy

Programme Clinical Director, West Yorkshire & Harrogate Cancer Alliance and Alliance Lead, Leeds Cancer Programme
| @profseanduffy

Sean Duffy is the West Yorkshire and Harrogate Cancer Alliance Lead. He is also the Strategic Lead for Cancer Services in Leeds. Professor Duffy was formally the National Clinical Director for Cancer for NHS England. He is a clinical academic gynaecologist based at Leeds Teaching Hospitals Trust.

He has had senior academic credentials in laboratory and health services research and has had national and regional responsibilities for undergraduate and postgraduate education in obstetrics and gynaecology. He has had senior roles in the Royal College of Obstetrics and Gynaecology and the University of Leeds. For the eight years before he was appointed National Clinical Director for Cancer, he was leading the Yorkshire Cancer Network as Medical Director.



Colette Goldrick

Director, NHS Engagement and Northern Ireland, Association of British Pharmaceutical Industry

Colette Goldrick joined the Association of the British Pharmaceutical Industry (ABPI) as Northern Ireland Director in November 2012. She was subsequently appointed Director of International Affairs in 2013 and Director of NHS Engagement in 2015. In her current role, she is responsible for fostering collaboration between the industry and UK health systems, resulting in triple wins for payers, patients and biomedical innovation.



Chris Gray

Regional Healthcare Manager, AstraZeneca
| @CJ1Gray

Chris Gray is a Regional Healthcare Manager with Astra Zeneca for the North East, Cumbria and Yorkshire. Chris leads on the AZ contribution to the joint working initiative with The Leeds Teaching Hospitals NHS Trust and a number of other collaborative projects between industry and the NHS across the region.

Chris' background is in biochemistry but has worked in a number of strategic partnership roles in healthcare industry in a career spanning over 15 years with the likes of GlaxoSmithKline and Dr Foster Intelligence.



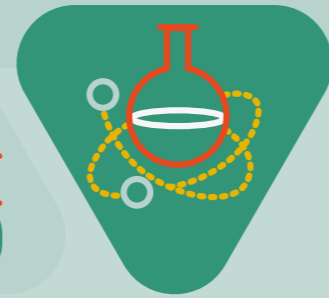
Professor Sir Chris Husbands

Vice Chancellor, Sheffield Hallam University and Chair of Yorkshire Universities
| @Hallam_VC

Professor Sir Chris Husbands is a university leader, academic, educationist and public servant. He has served as Vice Chancellor of Sheffield Hallam University since January 2016.

Sir Chris graduated with a double starred First in History from the University of Cambridge, where he went on to complete a doctorate in Geography. He was a teacher and senior manager in urban secondary comprehensive schools before becoming a university lecturer. His academic expertise lies in education policy and practice; his work has been developed in fifteen books and over four hundred papers and presentations. He has advised local and national governments in the UK and internationally, across four continents.

In 2016, Sir Chris was appointed by the Government as the Inaugural Chair of the Teaching Excellence and Student Outcomes Framework (TEF) heading up the assessment panel that will make decisions on awards he was subsequently re-appointed as Chair until August 2021. In 2018, Sir Chris was awarded a knighthood in the Queen's Birthday Honours for services to higher education. In May 2019, he was elected to the Board of Universities UK.



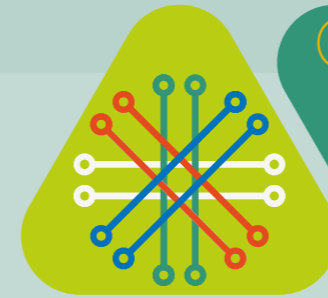
Dr Rani Khatib

Consultant Pharmacist, Leeds Teaching Hospitals NHS Trust | @DrRaniKhatib

Dr Rani Khatib is a Consultant Pharmacist in Cardiology and Cardiovascular Clinical Research at the Leeds Teaching Hospitals NHS Trust. He leads on the cardiology medicines optimisation agenda across secondary and primary care pathways in Leeds. He is an independent prescriber with direct patient responsibility. He leads the delivery of several innovative clinics.

Dr Khatib is an Honorary Senior Lecturer at the Leeds Institute of Cardiovascular and Metabolic Medicine, University of Leeds. At the University of Bradford, he is an Honorary Clinical Research Fellow.

He is a NICE Heart Failure Guideline Committee member, Fellow of Royal Pharmaceutical Society, Science Committee member at the European Society of Cardiology – CCNAP, and a committee member of the UKCPA cardiology group. Dr Khatib earned multiple recognitions and awards for innovation and excellence in patient care.



Felix Kumi-Ampofo

Assistant Director, Sheffield City Region
| @FelixKumiAmpofo

Felix Kumi-Ampofo is the Assistant Director for Policy and Programme Assurance at Sheffield City Region. He is currently leading a team to develop a new economic strategy for the city region. He is responsible for developing policy and providing evidence-based analysis and intelligence to shape the work of the SCR Local Enterprise Partnership and the Combined Authority. He is also responsible for the appraisal of projects seeking investment from Sheffield City Region.

Previously, Felix was a Principal Consultant at Mott MacDonald, and prior to that he was the Economic Evidence Manager at West Yorkshire Combined Authority and Yorkshire Forward. He was also a researcher at Leeds Business School for almost a decade.



Kathryn Lavery

Chair, Yorkshire Ambulance Service | @kathlavery

Born in that part of East Yorkshire called Holderness Kathryn graduated in Information Science from Leeds in 1973. However, she spent most of her working life as a Trade Union Full-Time Officer. She was elected to Hull City Council in 1988, retiring in 2007 having spent 3 years as the cabinet member for Economy, Business and Regeneration. She is an Honorary Alderman of Hull.

She has some 20 years experience of being an NHS Chairman, notably of NHS Hull, and now Yorkshire Ambulance having been appointed to the latter in July 2016.

She is the owner/Director of K. Lavery Associates, a single handed consultancy specialising in Board excellence, corporate governance and inter-sector working. Apart from Yorkshire Ambulance her current portfolio also includes being a director of NAVIGO CIC, the Chair of Humber Business Week, Consultant to the University of Hull Faculty of Health Sciences, and an Advisory Board member of Agencia Limited.



Tom Riordan

Chief Executive, Leeds City Council | @tomriordan

Since 2010 Tom has overseen £300m of efficiencies across the organisation and a significant transformation of the city, which is halfway through a £10bn investment pipeline. Tom's top priority is for the city's growth to be inclusive with benefits felt by people across Leeds, with a key ambition of reducing health inequalities and improving the health of the poorest the fastest. Tom has led the team that helped forge an innovative partnership on health and social care, leading work on a pioneering shared NHS/council patient care record, long term investment and innovative commissioning of Neighbourhood Networks. For his commitment to the region, Tom was awarded Yorkshire Man of the Year 2017. He is also a trustee on the Centre for Cities Board and the Council's mental health champion.

Dr Maggie McGowan

Director of Research & Innovation, University of Hull | @MADMCGowan

Dr Maggie McGowan is the Director of Research and Innovation at the University of Hull. Her career spans the private and higher education sectors. Before joining Hull, Maggie was employed at the University of York, holding roles covering research and business development. She worked in the brewing industry for a number of years, holding senior roles covering environmental and quality management and process development. She has a BSc and PhD in chemistry and MBA from Manchester Business School, where her research focussed on the barriers to collaboration between industry and academia. Maggie has a keen interest in place-based research and innovation and low-carbon technologies.

Henri Murison

Director, Northern Powerhouse Partnership | @henrimurison

As its first permanent Director, Henri has established the Northern Powerhouse Partnership as the business led organisation which convenes the North together. From securing further investment to guarantee HS2 and Northern Powerhouse Rail would work together as an integrated high-speed network, to challenging for a better deal for the most disadvantaged from the education system, his team are focused on how government, business and partners can drive the North's ambitions. Before joining the Partnership, he worked in senior research and public affairs roles for the West Yorkshire Police and Crime Commissioner and Yorkshire Building Society, as well as previously serving as Cabinet Member for Quality of Life at Newcastle City Council.

Richard Stubbs

Richard Stubbs, Chief Executive, Yorkshire & Humber Academic Health Science Network | @richarddstubbs

Richard is the CEO of the Yorkshire & Humber AHSN. The organisation connects health systems, academic organisations, local authorities, the third sector and industry to facilitate change across whole health and social care economies. He is also a member of the NHS Assembly, a national forum that helps shape the delivery of the NHS Long Term Plan.

Richard is the Chair of the advisory board for Sheffield Hallam University's Advanced Wellness Research Centre, a £14m research institution established to develop innovations that will improve population health and physical activity levels. He is also a non-executive director of the Sheffield City Region Local Enterprise Partnership (LEP). He is a Fellow of the Royal Society of Arts and a Leadership Fellow of St George's House, Windsor Castle. Richard is passionate about promoting diversity and recently instigated a national campaign to champion the role of diversity across the health innovation ecosystem.

Dr Peter O'Brien

Executive Director, Yorkshire Universities | @obrienpeter72

Peter was appointed Executive Director of Yorkshire Universities in April 2018. Previously, he was Deputy Local Growth Consultant at the Higher Education Funding Council for England (HEFCE). He is also a senior research fellow at the Centre for Urban and Regional Development Studies (CURDS), Newcastle University, where he specialises in, and has published widely on, issues relating to urban and regional development and governance, and infrastructure funding and financing. Peter has worked at a senior level in local and regional government in the north of England during the past decade.





Rosalind Way

Head of Strategic Partnerships, Novartis Pharmaceuticals UK Ltd

Rosalind joined Novartis UK in 2019 to explore how Novartis's relationships with the health and care sector can continue to evolve into long term, transformational partnerships. Before joining Novartis Rosalind was the Director of Transformation and Innovation at Cheshire and Mersey Health & Care Partnership, to assist in driving clinical transformation informed by best practice, opportunities for change and innovative thinking.

As an academic in Organisational Behaviour, her subject area was management in the NHS and from this she moved into a senior role of Research & Development in Primary Care. Having gained early experience in facilitating primary care to work in partnership for research, this extended to building relationships across the NHS, Academia and Industry. Following this Rosalind moved to Liverpool to build Liverpool Health Partners and as the Chief Operating Officer spent seven years developing not just the internal partnership between the NHS and Universities, but also relationships with industry for clinical research, academic collaborations, and opportunities with international partners.

Rob Webster

Chief Executive, South West Yorkshire Partnership NHS Foundation Trust and Lead, West Yorkshire & Harrogate ICS | @NHS_RobW

Rob joined South West Yorkshire Partnership NHS Foundation Trust as Chief Executive in May 2016 and is responsible for leading the organisation and its 4200 staff. Rob is also lead Chief Executive for the West Yorkshire & Harrogate Health and Care Partnership [Integrated Care System]. This sees him bringing together West Yorkshire health and care leaders, organisations and communities to develop ambitious plans for improved health, care and finances for 2.6 million people over the next five years.

Rob has worked in healthcare since 1990, taking on national leadership roles in the Department of Health on policy, transformation and delivery. He has been a Director for both the Prime Minister's Delivery Unit in the Cabinet Office and a national public/private partnership. He has been a successful Chief Executive in the NHS for over a decade, running both commissioning organisations and providers of NHS services. He has chaired formal Cancer, Primary Care, Community Trust and Learning Disability Networks. He was Chief Executive of the NHS Confederation between 2014 and 2016.

Rob is a visiting Professor at Leeds Beckett University and was proud to be made a Fellow of the Queen's Nursing Institute in 2014. In May 2016, Rob became an Honorary Fellow of the Royal College of General Practitioners.

Michael Wood

Head of Health Economic Partnerships, NHS Confederation | @NHSLocalGrowth

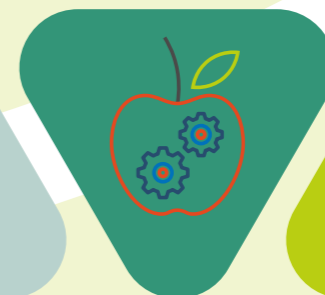
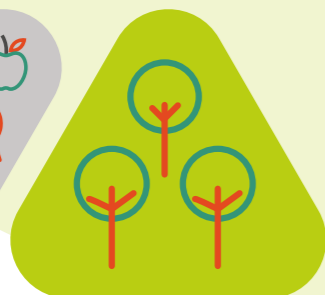
Michael has supported NHS organisations to understand and influence the local economic landscape since November 2015, first as Local Growth Advisor and now Head of Health Economic Partnerships. For part of this period, he combined his role at the NHS Confederation with the post of Deputy Local Growth Consultant for the Higher Education Funding Council for England (HEFCE). Prior to this he was a senior European policy manager at the NHS European Office for more than seven years. He has also worked at the Parliamentary and Health Service Ombudsman and for a Member of the European Parliament in Brussels.

As Head of Health Economic Partnerships, Michael works closely with the range of national, regional and local NHS bodies to support their planning on issues as diverse as population health, finance, estates and infrastructure, innovation, and skills and workforce. Michael is often approached by partner organisations such as local and combined authorities, local enterprise partnerships, universities, further education providers and the voluntary and community social enterprise sector, to discuss closer working with the NHS.

Sue Wynne

Chief Officer Employment & Skills, Leeds City Council

A senior local government officer with 30 years of experience across a range of policy and delivery roles, currently leading the Council's Employment and Skills service, translating national and regional policy agendas into effective successful delivery at the local level. Sue works with local learning institutions and training agencies, partners at local, regional and national level to support businesses to meet their skills needs and individuals seeking skills training and employment. Service priorities include young people and apprenticeships; adult learning and employment support services for those furthest from the labour market; and maximising the employment and training opportunities available through local anchor institutions.





Yorkshire & Humber Academic Health Science Network

@YHAHSN

Yorkshire & Humber AHSN is one of 15 AHSNs set up by NHS England to operate as the key innovation arm of the NHS. We act as a bridge between health care providers, commissioners, academia and industry. By connecting these sectors, we help to build a pipeline of solutions for the NHS from research and product development through to implementation and commercialisation.

At Yorkshire & Humber AHSN we believe in the power of new ideas to improve lives and our ambition is to work together with all our partners to make life better for the people in our region by improving their health and care and by creating a thriving economy for everyone.



Yorkshire Universities

@YorkshireUnis

Founded in 1987, Yorkshire Universities (YU) is a charity and company limited by guarantee. The vice-chancellors and principals of twelve higher education institutions in Yorkshire and the Humber are the members of the company and form YU's board of directors. YU's mission is to maximise the contribution of higher education to the region, through collaboration, where this generates greatest impact and public benefit, and aspiration and opportunity are supported. YU is a unique partnership based on a shared commitment to improve the economic and social prosperity and well-being of people and places in Yorkshire and the Humber.



The NHS Confederation

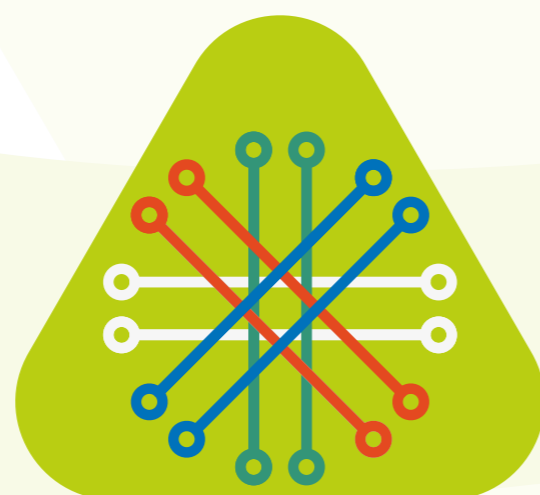
@nhsconfed

The NHS Confederation is the membership body that brings together and speaks on behalf of the whole NHS. We represent over 500 members across health and social care, including hospitals, community and mental health providers, ambulance trusts, independent sector organisations providing NHS care, and clinical commissioning groups.

We have three roles:

- to be an influential system leader
- to represent our members with politicians, national bodies, the unions and in Europe
- and to support our members to continually improve care for patients and the public.

All of our work is underpinned and driven by our vision of an empowered, healthy population supported by world-class health and care services; and our values of voice, openness, integrity, challenge, empowerment.



The Association of the British Pharmaceutical Industry

@ABPI_UK

The Association of the British Pharmaceutical Industry (ABPI) represents innovative research-based biopharmaceutical companies, large, medium and small, leading an exciting new era of biosciences in the UK. We represent companies who supply more than 80 per cent of the value of all branded medicines used by the NHS and who are researching and developing the majority of the current medicines pipeline, ensuring that the UK remains at the forefront of helping patients prevent and overcome diseases. Globally our industry is researching and developing more than 7,000 new medicines.

The ABPI is recognised by government as the industry body negotiating on behalf of the branded pharmaceutical industry for statutory consultation requirements including the pricing scheme for medicines in the UK.

HILL DICKINSON

Hill Dickinson LLP

@HD_Health

As a long-standing provider of legal services to the health and social care sector, we act for a growing list of more than 170 clients nationally. We provide strategic advice and support in all areas of healthcare law, including integrated care, governance, healthtech, life sciences, procurement, inquests, mental health, property and employment. We understand the key issues and motivators facing all NHS and private healthcare bodies today.

Our specialist team provides immediate access to high quality, practical legal advice, with clients benefiting from the service standards of a top international law firm and our commitment to working in partnership with you as trusted advisers.



